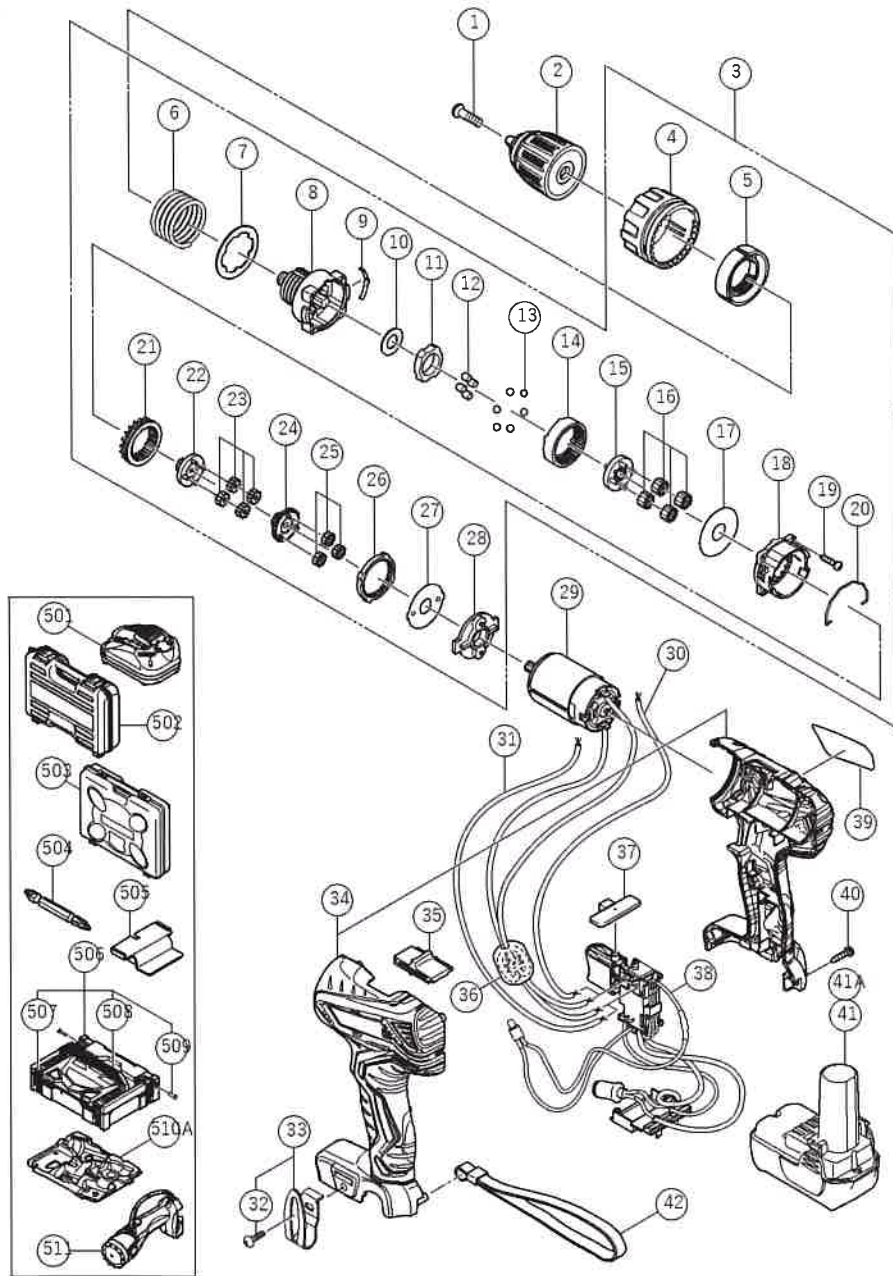


Hitachi Koki Co., Ltd.

HITACHI
Inspire the Next


CORDLESS DRIVER DRILL DS10DAL

Page:1/1



Rev.5

MODEL
DS10DAL

 Hitachi Koki Co., Ltd.

HITACHI
 Inspire the Next

Item No.	Code No.	Description	No. used	Remarks
1	337426	LEFT-HAND HEXALOBULAR M5	1	
2	337390	DRILL CHUCK 10TLRM-N (W/O CHUCK WRENCH)	1	
3	337407	GEAR BOX ASS'Y	1	INCLUD.4-28
4	337423	CLUTCH DIAL	1	
5	337422	NUT	1	
6	337421	SPRING	1	
7	337420	THRUST PLATE	1	
8	337408	FRONT CASE	1	
9	320773	CLICK SPRING	1	
10	337411	WASHER (B)	1	
11	337409	LOCK RING	1	
12	319744	ROLLER	4	
13	306936	STEEL BALL D5	6	
14	337412	RING GEAR	1	
15	337410	CARRIER	1	
16	337415	PLANET GEAR (C) SET (4 PCS.)	4	
17	320762	PLATE (B)	1	
18	337413	REAR CASE	1	
19	337425	SCREW SET D2.6X12 (4 PCS.)	4	
20	337424	SHIFT ARM (A)	1	
21	337416	SLIDE RING GEAR	1	
22	337414	PINION (C)	1	
23	320781	PLANET GEAR (B) SET (4 PCS.)	4	
24	337417	PINION (B)	1	
25	337418	PLANET GEAR (A) SET (3 PCS.)	3	
26	328726	FIRST RING GEAR	1	
27	320768	PLATE (A)	1	
28	337419	MOTOR SPACER	1	
29	337406	MOTOR DC 12V	1	
*32	337357	TRUSS HD. SCREW M4 (BLACK)	1	FOR EUROPE,RUS
*33	337362	HOOK (A) ASS'Y	1	INCLUD.32 FOR EUROPE,RUS
34	337403	HOUSING (A).(B) SET	1	
35	337405	SHIFT KNOB	1	
*36	334866	INTERNAL WIRE FERRITE SET	1	FOR EUROPE,RUS,ISR,SAF,TUR
37	329548	PUSHING BUTTON (A)	1	
38	337359	SWITCH TERMINAL SET	1	
39		NAME PLATE	1	
40	313687	TAPPING SCREW (W/FLANGE) D3X16 (BLACK)	8	
*41	337384	BATTERY BCL 1030 (EUROPE)	2	INCLUD.505
*41A	329371	BATTERY BCL 1015 (EUROPE,AUS,NZL)	2	INCLUD.505
		STANDARD ACCESSORIES		
501		CHARGER (MODEL UC 10SL2)	1	
502	336642	CASE	1	
504	983006	+ DRIVER BIT NO.2 65L	1	
505	331086	BATTERY COVER	1	
*506	336643	CASE ASS'Y (STACKABLE)	1	INCLUD.507-509
*507	336472	LATCH	4	
*508	336473	HANDLE	1	
*509	336474	HINGE	2	
*510A	337941	INNER TRAY	1	
		OPTIONAL ACCESSORIES		
*604	337384	BATTERY BCL 1030 (EUROPE)	1	INCLUD.505 FOR EUROPE,RUS,AUS,NZL