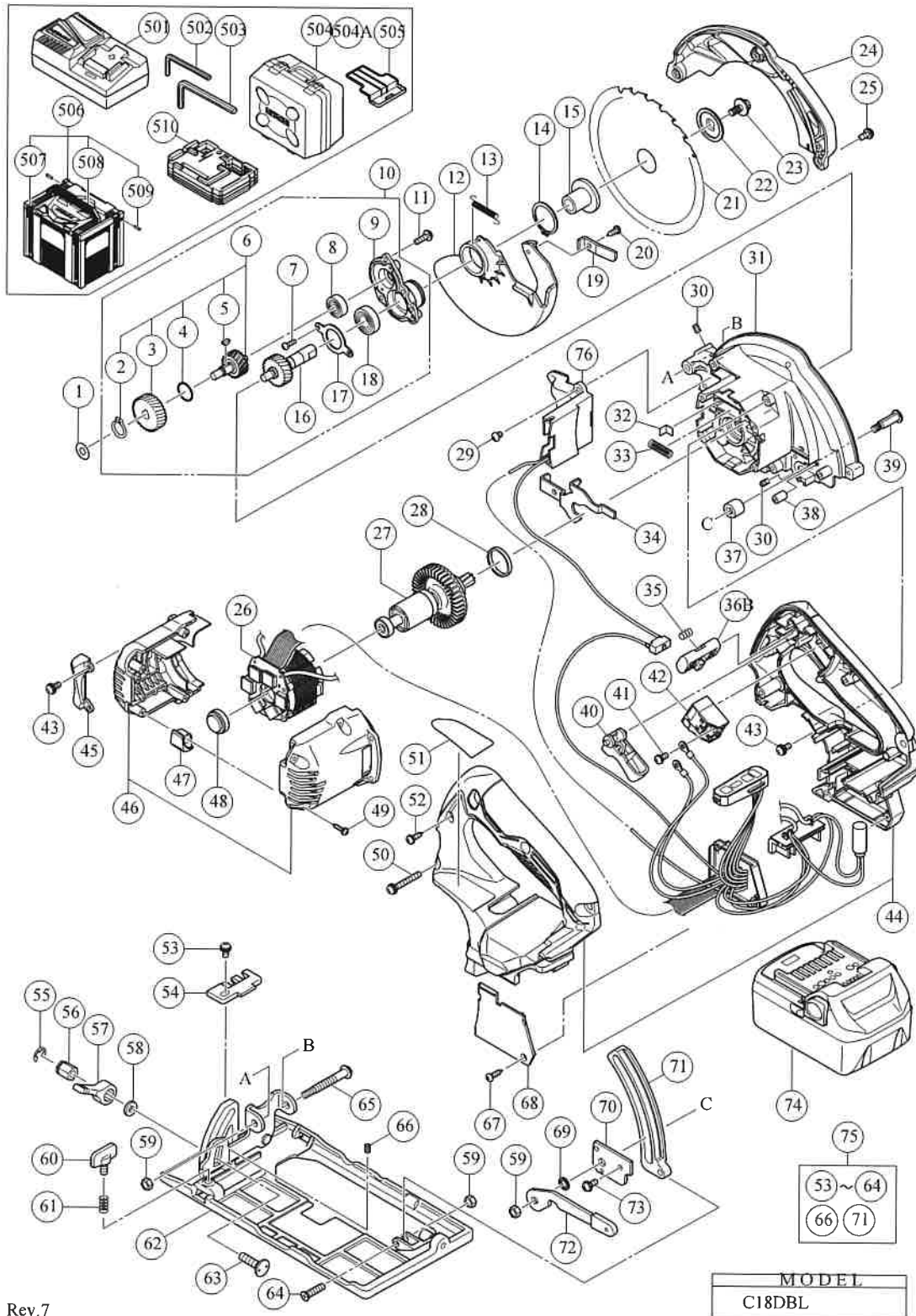


Hitachi Power Tool Parts List

SVG Exploded Diagram

CORDLESS CIRCULAR SAW C 18DBL



PARTS

ITEM No.	CODE No.	DESCRIPTION	USED No.	REMARKS
1	329975	WASHER (A)	1	
2	939540	RETAINING RING FOR D10 SHAFT (10 PCS.)	1	
3	334144	FIRST GEAR	1	
4	876319	O-RING (S-14)	1	
5	302047	WOODRUFF KEY	1	
6	334226	SECOND SHAFT ASS'Y	1	INCLUDE.2-5
7	949203	MACHINE SCREW M3X8 (10 PCS.)	3	
8	606ZZM	BALL BEARING 606VV	1	
9	333672	BEARING HOLDER	1	
10	334228	BEARING HOLDER ASS'Y	1	INCLD.6-9,16-18
11	951039	MACHINE SCREW (W/SP. WASHER) M4X12	3	
12	336552	LOWER GUARD	1	
13	333677	RETURN SPRING	1	
14	939548	RETAINING RING FOR D22 SHAFT (10 PCS.)	1	
15	333665	WASHER (A)	1	
16	334227	SPINDLE GEAR SET	1	
17	333673	BEARING COVER	1	
18	6900VV	BALL BEARING 6900VVCMP2L	1	
19	333894	KNOB	1	
20	302090	TAPPING SCREW D4X10 (BLACK)	1	
21	336832	TCT SAW BLADE 125MM-D20 HOLE-NT24	1	
* 21	336832	TCT SAW BLADE 125MM-D20 HOLE-NT24	2	FOR AUS
22	333666	WASHER (B)	1	
23	333893	HEX. BOLT (W/FLANGE) M5X14	1	
24	336648	SAW COVER	1	
25	333781	MACHINE SCREW (W/WASHER) M4X12 (BLACK)	3	
26	340872	STATOR FET PCB ASS'Y	1	INCLUD.41,42
27	336547	ROTOR	1	
28	328453	RUBBER RING (A)	1	
29	949214	MACHINE SCREW M4X6 (10 PCS.)	1	
* 30	319541	SEAL LOCK HEX. SOCKET SET SCREW M5X6	2	
31	336646	GEAR COVER	1	
32	334137	SPRING HOOK	1	
33	334225	SPRING	1	
34	336555	LOCK LEVER	1	
35	336650	SPRING	1	
36B	339247	KNOB	1	
37	333681	CAM	1	
38	333682	LOCK SLEEVE	1	
39	333680	CAM SHAFT	1	
40	336545	TRIGGER	1	
41	307887	MACHINE SCREW (W/WASHER) M3.5X6	2	
42	332552	SWITCH	1	
43	305691	MACHINE SCREW (W/WASHERS) M4X14 (BLACK)	5	
44	336550	HANDLE SET	1	
45	333669	FLOW GUIDE (C)	1	
46	336548	HOUSING SET	1	
47	336554	CUSHION	2	
48	328201	RUBBER BUSHING	1	
49	332929	TAPPING SCREW (W/FLANGE) D3X20	4	
50	334141	MACHINE SCREW (W/WASHERS) M4X35 (BLACK)	2	
51		NAME PLATE	1	
52	307811	TAPPING SCREW (W/FLANGE) D4X16 (BLACK)	3	
53	317200	MACHINE SCREW (W/WASHERS) M4X8 (BLACK)	1	
54	320394	GUIDE PIECE	1	
55	942827	RETAINING RING (E-TYPE) FOR D8 SHAFT	1	
56	333660	SPECIAL NUT M6	1	

PARTS

ITEM No.	CODE No.	DESCRIPTION	USED No.	REMARKS
57	333659	CLAMP LEVER	1	
58	949425	WASHER M6 (10 PCS.)	1	
59	308387	U-NUT M5	3	
60	307898	WING BOLT M6X18	1	
61	324876	SPRING	1	
62	336833	BASE (A)	1	
63	314623	BOLT (SQUARE) M6X22	1	
64	333664	SPECIAL BOLT	1	
65	325236	ADJUSTING SCREW (A)	1	
66	308109	SLOTTED HD. SET SCREW (SEAL LOCK) M6X8	1	
67	334333	TAPPING SCREW D3X12 (BLACK)	1	
68	336553	CONTROLLER COVER	1	
69	334242	WAVE WASHER 8	1	
70	333678	COVER PLATE	1	
71	333661	LINK	1	
72	336556	LEVER	1	
73	325079	MACHINE SCREW (W/SP. WASHER) M4X8 (BLACK)	1	
74	335790	BATTERY BSL 1850 (EUROPE,AUS,NZL)	2	INCLUD.505
75	336647	BASE ASS'Y	1	INCLUD.53-64,66,71
76	338982	LED. MICRO SWITCH SET	1	
		STANDARD ACCESSORIES		
		OPTIONAL ACCESSORIES		

STANDARD ACCESSORIES

ITEM No.	CODE No.	DESCRIPTION	USED No.	REMARKS
501		CHARGER (MODEL UC 18YFSL)	1	
501		CHARGER (MODEL UC 18YSL3)	1	
502	990666	HEX. BAR WRENCH 2.5MM	1	
503	944458	HEX. BAR WRENCH 4MM	1	
* 504A	370338	CASE	1	
* 505	329897	BATTERY COVER	2	
506	337528	CASE ASS'Y (STACKABLE 4)	1	INCLUD.507-509
507	336472	LATCH	4	
508	336473	HANDLE	1	
509	336474	HINGE	2	
510	339727	BOTTOM CUSHION	1	

OPTIONAL ACCESSORIES

ITEM No.	CODE No.	DESCRIPTION	USED No.	REMARKS
601	302756	GUIDE	1	
602	329063	DUCT ADAPTER SET	1	